

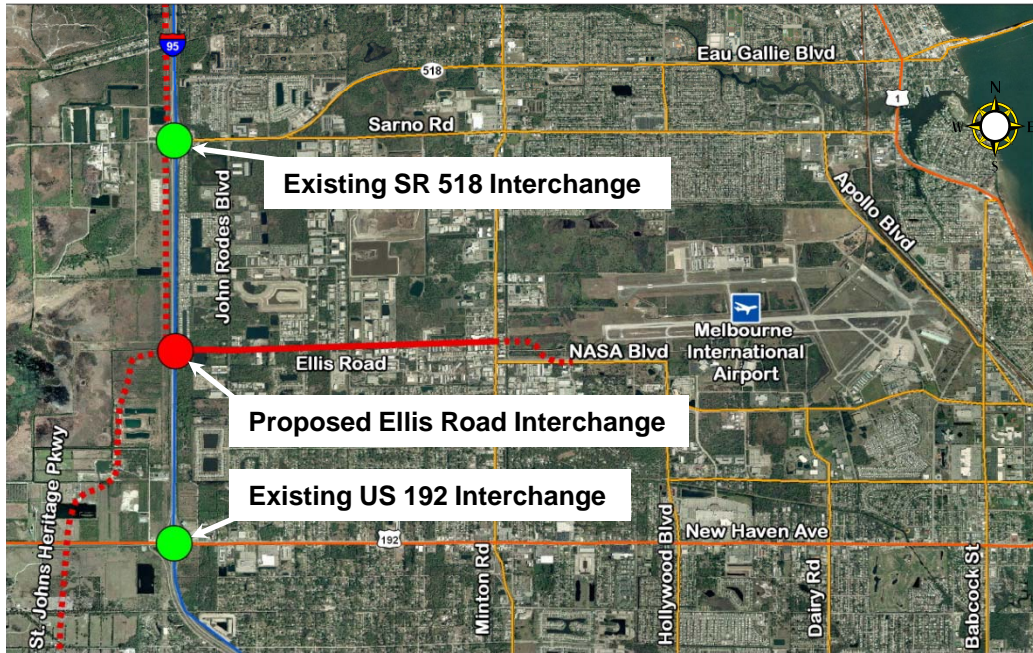


# Newsletter

Fall 2010 Volume No. 1

# ELLIS ROAD PD&E STUDY

The purpose of this newsletter is to introduce you to the Ellis Road Project Development and Environment (PD&E) Study. This study will examine a new interchange on I-95 along with improvements to Ellis Road, connecting Melbourne International Airport (MLB) with I-95. A multi-lane roadway with controlled access and interstate connectivity will provide improved mobility of people and goods to and from the airport.



The project will assist in reducing the near term and future traffic demands on New Haven Avenue (US 192) and Eau Gallie Boulevard (SR 518). Specifically, this study will examine the following:

1. A new interchange at I-95, between the existing Eau Gallie and US 192 interchanges;
2. Alternative alignments for a multi-lane connector from I-95 to Wickham Road;
3. A connection to the proposed Palm Bay Parkway (a.k.a. St. Johns Heritage Parkway);
4. An Access Management Plan for the proposed Ellis Road improvements;
5. The potential social, economic, and environmental effects of the alternatives;

## Study Limits and Study Team

The Ellis Road study includes a new interchange on Interstate 95 with a connection to Ellis Road, and an upgrading of Ellis Road from John Rodes Boulevard to Wickham Road in Brevard County.

The primary study team is the Florida Department of Transportation (FDOT) District 5 and the consulting firm of Reynolds, Smith, and Hills, Inc. (RS&H). Specialty sub-consultants are providing professional services in the areas of ground survey, aerial photography, geotechnical investigation, utility identification, public involvement and cultural resources.

## What is a PD&E Study?

A PD&E Study is the formal process that FDOT uses to ensure that consideration is given to engineering design, project costs, environmental and social impacts, and public input in the development of major transportation projects.

The basic steps of a PD&E Study include data collection, development and analysis of the alternatives, development of project documents, and securing Location and Design Concept Approval from the Federal Highway Administration (FHWA). Public involvement is a very important part of the PD&E process, and there will be several formal opportunities during this study for the public to provide input on the project. The schedule on the reverse side of the newsletter illustrates the study process.

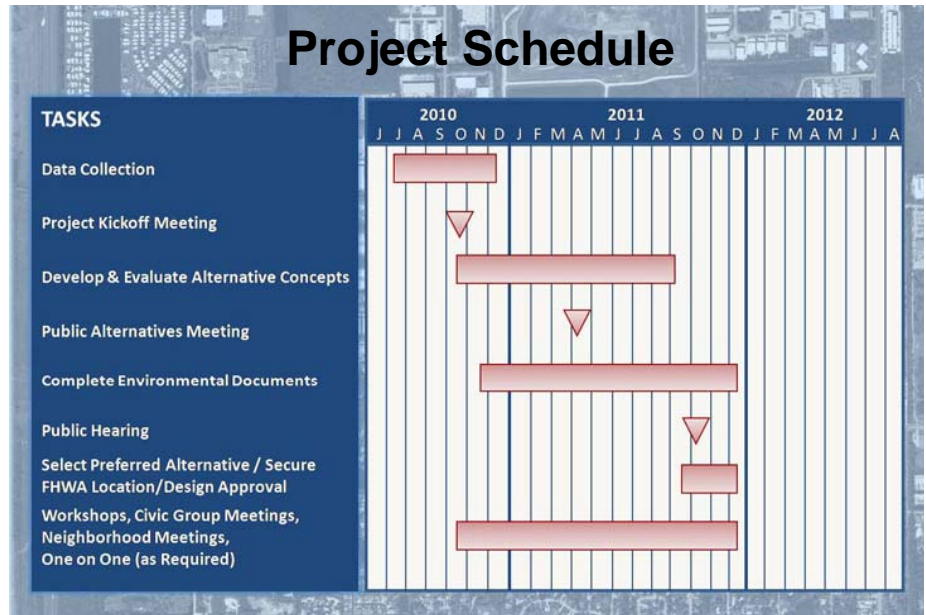
*Below are ways that you can learn more about the project and provide your input.*

## Public Alternatives Meeting

The purpose of this meeting will be to present the results of the study to date and obtain comments on the viable alternatives that are being considered. Visual displays will be available for review. The Alternatives Public Meeting is currently scheduled to be held in the spring of 2011.

## Public Hearing

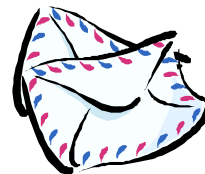
A Public Hearing, as required by Federal regulation and State law, will be held to present the recommended alternative. This Hearing will be held once the environmental document has been approved by the FHWA or as directed by the FDOT District Environmental Management Office. All meetings are open to the public. The Public Hearing is currently scheduled to be held in the fall of 2011.



## Get Involved!

The Florida Department of Transportation wants to hear your comments and suggestions regarding the Ellis Road PD&E Study. Your active role in the development of the study is vital to the success of the study. There are several ways for you to get involved in the PD&E Study process:

1. Attend advertised public meetings and workshops;
2. Place your name on the project mailing list;
3. Visit our project web site at [www.ellisroadpde.com](http://www.ellisroadpde.com);
4. Write, call, or e-mail us with your questions and comments;



The Ellis Road PD&E Study will include an extensive public outreach effort. Opportunities for individuals to participate and provide input will be offered through a Public Workshop and a Public Hearing. Additional meetings can be arranged for groups or business associations by contacting the FDOT and/or Consultant project managers identified below. As part of the Ellis Road PD&E Study public involvement effort, all meetings scheduled throughout the project are open to the public.

If you received this newsletter in the mail, you are already on the project mailing list. However, if you know of someone else who should receive the newsletter or has questions or comments about the study, please let us know. No question is too basic, too long, or untimely. We value your ideas and look forward to working with you as we develop alternatives for improving Ellis Road.

### Contact Information:

**Daniel Kristoff, PE**  
Consultant Project Manager  
Reynolds, Smith and Hills, Inc.  
10748 Deerwood Park Blvd. South  
Jacksonville, FL 32256  
(904) 256-2139  
E-mail: [daniel.kristoff@rsandh.com](mailto:daniel.kristoff@rsandh.com)

**Ms. Mary McGehee, EI**  
Florida Department of Transportation  
719 South Woodland Boulevard  
Deland, FL 32720, MS-4-501  
(386) 943-5063  
E-mail: [Mary.McGehee@dot.state.fl.us](mailto:Mary.McGehee@dot.state.fl.us)